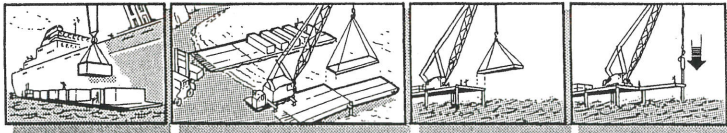


# ELEVATED CAUSEWAY SYSTEM (MODULAR) ELCAS (M)

## ASSEMBLY

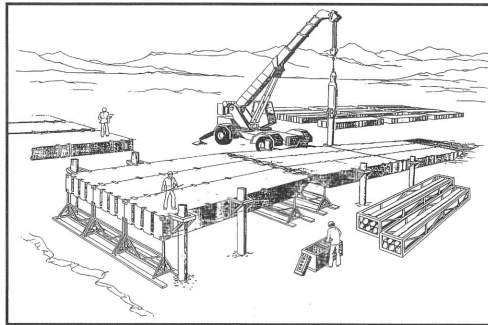


Pontoons are offloaded to form barges which are used to float additional pontoons, vehicles and handling equipment to shore.

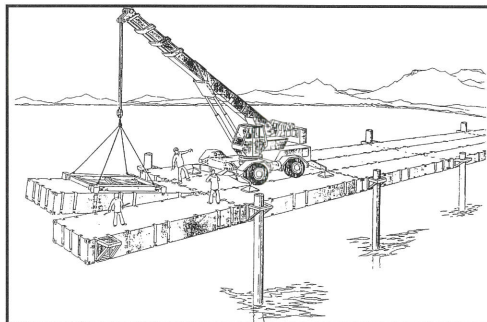
Assembly of the causeway commences from shore outwards by linking the pontoon sections together.

Unique cantilevering system enables assembly of 24ft wide roadway to continue above rough surf conditions.

Causeway and pierhead supported on piles. System and piles are removed by reversing the assembly process.



BEACH ASSEMBLY



CANTILEVERING

## MISSION

A modular causeway system which allows deep draught supply ships to unload cargo onto any beach. It can be transported by a single supply vessel to provide a self-sufficient cargo unloading facility up to 3000ft long. Assembly is seven days or less.

## CHARACTERISTICS

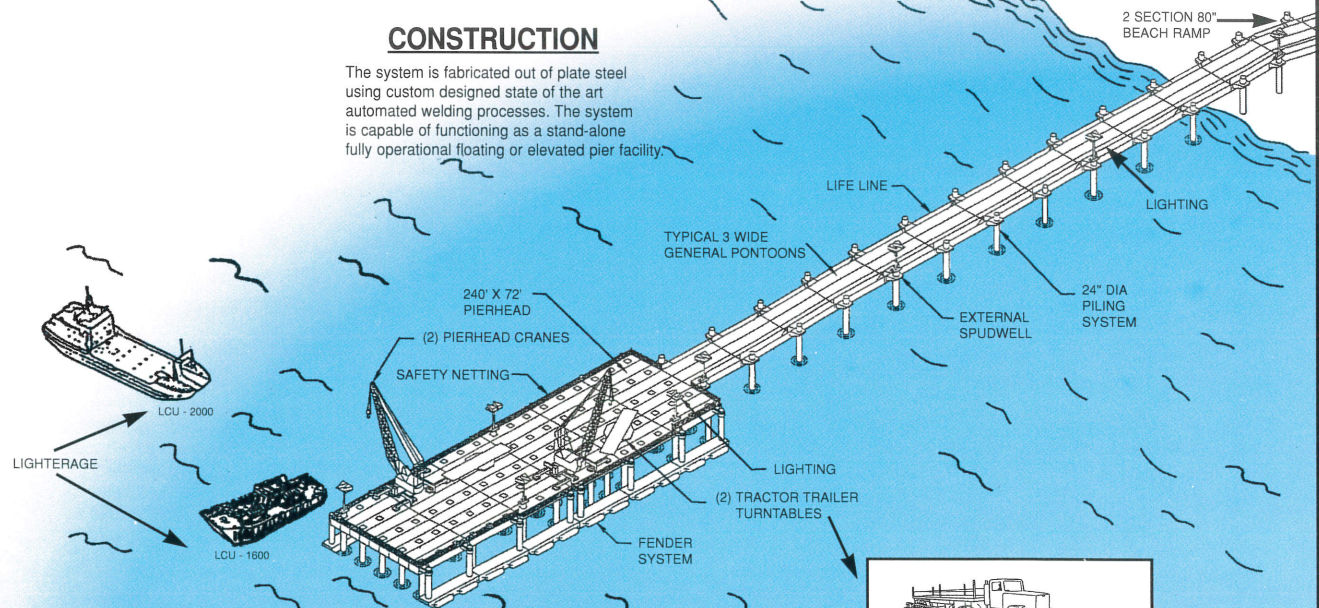
- Turn-key self contained system
- Transportable on any ISO containership
- Unique cantilevering pontoons
- Rugged and efficient off-loading
- 100% mission readiness
- Personnel and ship safety designed-in
- Enhanced logistics over the shore
- 2-way traffic capability
- Versatile lighterage compatibility
- Special corrosion resistance paint

## MAJOR EQUIPMENT

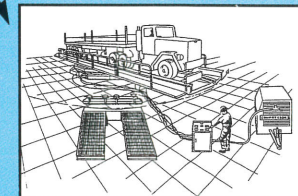
DESCRIPTION	QTY. PER FACILITY
Pierhead Cranes (165 Ton)	2
Pierhead Turntables	2
Rough Terrain Cargo Handling Vehicle	2
Mobile Hydraulic Crane (RT) 30 Ton	1
Forklift (Rough Terrain)	1
Forklift with Extendable Boom (Trak International 6000)	1
Air Compressors	4
Generators	2
Beach Matting	Lot
Welding Machines	4
Pile Drivers	2
Pile Extractors	1
Portable Light Plants	4
Fender Cushions	24
Navigation Lights	Lot

## CONSTRUCTION

The system is fabricated out of plate steel using custom designed state of the art automated welding processes. The system is capable of functioning as a stand-alone fully operational floating or elevated pier facility.



ELCAS (M) was designed by Jered Industries, Inc. and is based on 8ft x 40ft pontoon modules which link together to form a rigid floating structure comprising beach-ramp, roadway and pierhead. The system is containerized and includes tools and handling equipment for assembly and disassembly for later use.



TURNTABLE ARRANGEMENT